


TRI FIXX

MRX[®]

ONE-PIECE STAINLESS STEEL
SELF DRILLING SCREWS



SUPERIOR SELF DRILLING &
STRENGTH PERFORMANCE
WITH ANTI-CORROSION
PROPERTIES EQUIVALENT
TO 304 STAINLESS

TRI= FIXX

MRX[®]

SUPERB DRILLING PERFORMANCE IN
STEEL, ALUMINIUM AND EVEN
STAINLESS STEEL

CAPABLE OF
SELF DRILLING
INTO STAINLESS
STEEL MATERIAL
UP TO 2mm
THICK



ONE PIECE STAINLESS STEEL



MRX[®] self drilling screws are made from a unique formulation of stainless steel alloy which unlike other forms of stainless steel, can be heat treated to obtain a hardness equivalent to tempered carbon steel screws. MRX[®] is a "one-piece" magnetic stainless steel screw, where the entire effective length can be utilized.

EXTENSIVE IN
PLACE COST
SAVINGS
COMPARED
WITH PRE-
DRILLING
THREAD
FORMING
SCREWS



NO WELDS OR POTENTIAL WEAK SPOTS



The risk of fractures at welding seams (sometimes evident with bi-metal alternatives) is entirely eliminated.

ANTI-CORROSION PROPERTIES
EQUIVALENT TO 304 STAINLESS



NO SURPRISES



You can always trust MRX[®] When the demands are high we can guarantee that MRX[®] will perform exactly as we promise. Every process is critically controlled to ensure high and consistent quality in material and performance.

SUPERIOR DRILLING PERFORMANCE COMPARED TO BI-METAL OR CARBON STEEL SCREWS



MRX[®] one-piece self drilling screws are engineered to exhibit superior drilling performance compared to other stainless self drilling screws and even carbon steel screws. With the capacity to self drill steel up to 12mm thick, MRX[®] has proven itself as the market leader with more than 16 years experience in the toughest environments.

MRX[®] screws exhibit greater shear and pull-out strength compared to equivalent sizes manufactured from carbon steel.

| 12mm |



RANGE
OF SIZES
AVAILABLE
FOR FIXING
INTO MATERIAL
THICKNESS
FROM
1.20mm - 12.5mm



MADE TO LAST



With the addition of Molybdenum, MRX[®] self drilling screws feature corrosion resistance properties better than or equivalent to stainless steel grade 304. Molybdenum is the element that gives type 316 stainless its superior corrosion resistance.

Salt spray and Kesternich (sulphur dioxide) tests indicate the durability of MRX[®] is superior to 304 bi-metal screws (stainless head/shank with welded carbon steel point), stainless steel grade 410 self drilling screws and mechanically galvanized or organically coated carbon steel fasteners.

SPECIFIED
IN MAJOR
AUSTRALIAN &
WORLDWIDE
PROJECTS
SINCE 1996



Look for the unique MRX[®] head mark for assurance and peace of mind in the toughest environments, available in a range of styles and sizes to suit every professional need. MRX[®] has been supplied to many successful construction projects in Australia and throughout the world and is today specified by leading consulting engineers and construction companies.

SUPERIOR STRENGTH &
PULLOUT COMPARED TO
BI-METAL OR CARBON
STEEL SCREWS



Look for the unique MRX® head mark



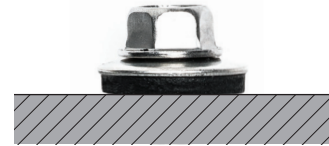
MECHANICAL PROPERTIES

Size Gauge	Torsional Strength ↻ (Nm)	Tensile Strength ⇅ (kN)	Shear Strength ↔ (kN)	Pull-Out Strength (kN) Plate Thickness (mm)								
				1.6	2.0	2.3	3.6	4.5	5.0	6.0	9.0	12.0
8	8.7	12.5	8.1	4.2	5.0	6.0	-	-	-	-	-	-
10	12.8	16.3	10.7	4.7	5.6	6.8	10.5	14.1	-	-	-	-
12	20.0	22.3	14.6	4.8	5.4	6.6	11.6	-	20.1	-	-	-
12 (Series 500)	22.0	23.5	15.8	-	-	-	-	14.3	-	18.0	25.7	25.7
14	31.0	30.3	19.8	5.4	7.2	7.9	12.1	17.5	22.5	27.0	-	-

The above figures are based on actual test data and are ultimate failure loads, not recommended working loads. For combined loading an engineer should be consulted. As metal properties may vary, the above figures should be used as a guide only.

Installation Instructions

It is recommended to use a screwdriver with depth gauge attachment that maintains RPM of 1500–2500 when fixing into steel less than 2.0mm thick and RPM of 1200–1800 when fixing into thicker material. Always use a sealing washer for external installation or where there is a risk of condensation or splash. Use a depth gauge for correct tightening, never over tighten screws.



CORROSION PROPERTIES

Kesternich Test DIN 50018 (ISO6988)

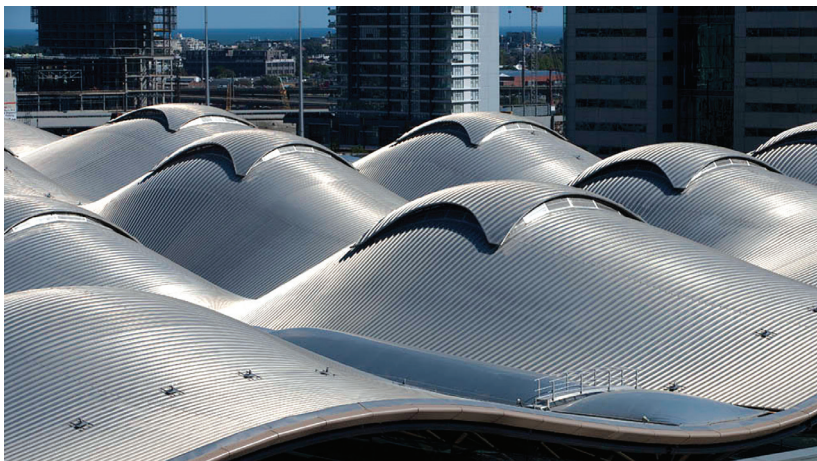
Sample	Drill Point	Thread	Head
MRX®	No Rust	No Rust	No Rust
304SS Bi-Metal Type 1	> 50% RR	> 50% RR	25–50% RR 25–50% WR
304SS Bi-Metal Type 2	> 50% RR	10–25% RR 5–10% BR 5–10% WR	1–2% BR 5–10% WR

(Tested for 40 cycles of 8 hour duration in a saturated atmosphere with the presence of sulfur dioxide)

RR = Red Rust | BR = Black Rust | WR = White Rust

MRX® screws subjected to neutral salt spray test according to BS 7479:1991 (ISO 9227:1990) for up to 1000 hours showed no signs of corrosion.

MRX® has high anti-corrosion properties however shouldn't be used where high levels of chlorine and humidity are present such as indoor swimming pool environments or where high levels of corrosional gas is present such as chemical plants or refineries.



Southern Cross Station — Melbourne



Clem Jones Tunnel — Brisbane

SUPERIOR SELF DRILLING PERFORMANCE EXCEPTIONAL CORROSION RESISTANCE IN A CLASS OF THEIR OWN

Part no.	Description	Diam (mm)	Length (mm)	Threads Per Inch (TPI)	Drive Type	Max. Drill Capacity (mm)
----------	-------------	-----------	-------------	------------------------	------------	--------------------------



HEX HEAD — MRX®

General purpose hex head screw for fixing to standard steel sections.

SDHS10019	10.16 × 19mm	4.8	19	16	5/16"	4.0
SDHS10035	10.16 × 35mm	4.8	35	16	5/16"	4.0
SDHS12020	12.14 × 20mm	5.5	20	14	5/16"	4.5
SDHS12045	12.14 × 45mm	5.5	45	14	5/16"	4.5
SDHS12065	12.14 × 65mm	5.5	65	14	5/16"	4.5
SDHS14025	14.14 × 25mm	6.3	25	14	3/8"	6.0
SDHS14035	14.14 × 35mm	6.3	35	14	3/8"	6.0
SDHS14050*	14.14 × 50mm	6.3	50	14	3/8"	6.0
SDHS14060*	14.14 × 60mm	6.3	60	14	3/8"	6.0



HEX HEAD — MRX® with Bonded Washer

Available with a 16mm or 19mm OD Aluminium or Stainless Steel bonded washer.

SDNS10019	10.16 × 19mm	4.8	19	16	5/16"	4.0
SDNS10035	10.16 × 35mm	4.8	35	16	5/16"	4.0
SDNS12020	12.14 × 20mm	5.5	20	14	5/16"	4.5
SDNS12045	12.14 × 45mm	5.5	45	14	5/16"	4.5
SDNS12065	12.14 × 65mm	5.5	65	14	5/16"	4.5
SDNS14025	14.14 × 25mm	6.3	25	14	3/8"	6.0
SDNS14035	14.14 × 35mm	6.3	35	14	3/8"	6.0
SDNS14050*	14.14 × 50mm	6.3	50	14	3/8"	6.0
SDNS14060*	14.14 × 60mm	6.3	60	14	3/8"	6.0

*Sizes available on order



HEX HEAD SERIES 500 — MARUTEX®

Extended drill point for fixing to heavy gauge structural steel up to 12.0mm thickness.

S5HS12035	12.24 × 35mm	5.5	35	24	5/16"	12.0
S5HS12045	12.24 × 45mm	5.5	45	24	5/16"	12.0
S5HS12065	12.24 × 65mm	5.5	65	24	5/16"	12.0



HEX HEAD SERIES 500 — MARUTEX® with Bonded Washer

Available with a 16mm or 19mm OD Aluminium or Stainless Steel bonded washer.

S5NS12035	12.24 × 35mm	5.5	35	24	5/16"	12.0
S5NS12045	12.24 × 45mm	5.5	45	24	5/16"	12.0
S5NS12065	12.24 × 65mm	5.5	65	24	5/16"	12.0

E COMBINED WITH PUT MRX®

Part no.	Description	Diam (mm)	Length (mm)	Threads Per Inch (TPI)	Drive Type	Max. Drill Capacity (mm)
----------	-------------	-----------	-------------	------------------------	------------	--------------------------

WAFER HEAD — MRX®



Broad wafer head for various sheet metal applications including architectural metal cladding.

SDWS10022	10.16 × 22mm	4.8	22	16	No.2 PH	4.0
SDWS10032	10.16 × 32mm	4.8	32	16	No.2 PH	4.0

CSK (FLAT) HEAD — MRX®



Regular CSK head for a flush finish, suitable for fixing timber decking to steel sub-frame.

SDCS10032	10.16 × 32mm	4.8	32	16	No.2 PH	4.0
SDCS10038	10.16 × 38mm	4.8	38	16	No.2 PH	4.0
SDCS10050	10.16 × 50mm	4.8	50	16	No.2 PH	4.0
SDCS10064	10.16 × 64mm	4.8	64	16	No.2 PH	4.0

CSK (FLAT) UNDERCUT HEAD — MRX®



10G screw with 8G CSK undercut head for applications requiring a very low and flush finish, suitable for hinge installation.

SDUS10020B	10.16 × 20mm	4.8	20	16	No.2 PH	4.0
------------	--------------	-----	----	----	---------	-----

PAN HEAD — MRX®



Versatile and small pan head fastener for various sheet metal applications, also available with a square drive recess suitable for architectural metal cladding applications.

SDPS06013	6.20 × 12mm	3.2	13	20	No.2 PH	3.2
SDPS08013	8.18 × 13mm	4.2	13	18	No.2 PH	3.2
SDPS08016	8.18 × 16mm	4.2	16	18	No.2 PH	3.2
SDPS08019	8.18 × 19mm	4.2	19	18	No.2 PH	3.2
SDPS08019-SQ	8.18 × 19mm	4.2	19	18	No.2 SQUARE	3.2
SDPS08025	8.18 × 25mm	4.2	25	18	No.2 PH	3.2



Perth Arena



Clem Jones Tunnel — Brisbane

TRI-FIXX

MRX[®]

ONE-PIECE STAINLESS STEEL SELF DRILLING SCREWS

TRI-FIXX PTY LTD
ABN 48 458 875 344

Melbourne
26-30 Howleys Road
Notting Hill, Victoria 3168

PO BOX 1033
Mount Waverley, Victoria 3149

Phone 03 9543 8422
Fax 03 9543 4431
Email sales@trifixx.com.au

Geelong
7-8 Industry Court
Lara, Victoria 3212
Phone 03 5282 1755
Fax 03 5282 6090
Email saleslara@trifixx.com.au

Sydney
2-3 Voyager Circuit
Glendenning
New South Wales 2761
Phone 02 9677 9029
Fax 02 9677 9023
Email sales@trifixxnsw.com.au

www.trifixx.com.au

